

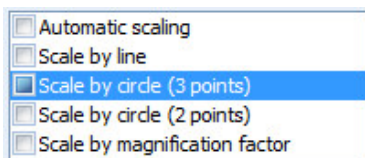
User documentation

This document is just a quick reference guide. You can find detailed, additional information in the **User Manual** as well as the **Image & Scaling Instructions**.

Selecting Image & Launching Application

1. Open a study and select the required image in the patient file for planning.
2. The application is started and the image is displayed. Automatic scaling is initiated, or you are prompted to run manual scaling instead.

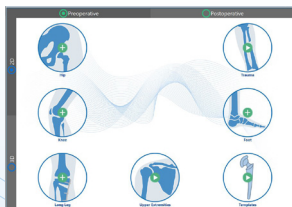
Manual Scaling of the Image



1. Select the scaling mode. You can scale using a line (for a visible rectangular reference object), a circle (for a visible scaling sphere) or a magnification factor. We recommend using a circle for scaling.
2. Zoom in to improve scaling accuracy (by using the scroll wheel of the mouse).
3. Draw a line or circle upon the reference object.
4. Enter the size of the reference object in mm, click on **Apply Scale**. The Scaling is now applied.

Module Selection


Select the module of your choice in the module overview. The functions shown in the module tool vary depending on the selected module.



Performing the Planning

Execute the required functions/steps in the order shown.

Exporting the Planning to PACS

1. Once the planning is finished, click on the **Export to PACS** icon in the toolbar 
2. In your PACS, the image including the planning is added to the original series as a new copy.
3. You can view all planning information in the corresponding planning info (e.g. materials used for cup/stem).

Using the Module Tool

The module and function tool guides you through the various functions and procedures. Steps that have yet to be performed are displayed with a yellow arrow. Finished steps are displayed with a green and white check mark. Steps with multiple options are displayed with a blue arrow and can be shown or hidden with a mouse click. Inactive steps are displayed in gray with a padlock symbol.

Tips and Tricks

- Return to the previously active function with a right click
- Check the information window, e.g. if you get lost while using the application.
- Click on the **Menu** button to show the implant menu.
- Always check the checkboxes for reflecting the proper body side – **right** or **left**.
- Use the arrow keys of your keyboard.
- To reposition a hip implant, make two left clicks.
- In some cases, you need to draw an auxiliary line before performing measurements.

Using the Information Window

The information window shows the current function of the left and right mouse buttons, as well as the current capture mode of the cursor. The preset capture mode can be changed if necessary:

Key E	End point
Key F	Free
Key L	Line/Element
Key M	Center
Key P	Point
Key S	Intersection point

Default Keyboard Shortcuts

Key F1	Loads the user manual*
Key H	Reduce zoom factor (half)
Key T	Increase zoom factor (double)
Key A	Zoom all
Key W	Zoom rect.
Key X	Move image area – Zoom Pan
Key C	Activate delete mode
Key U	Undo
Shift + U	Redo
Ctrl + N	New planning
Ctrl + O	Open planning
Ctrl + S	Save planning
Ctrl + P	Print planning
Ctrl + Z	Undo
Ctrl + Y	Redo
Ctrl + X	Cut
Ctrl + C	Copy
Ctrl + V	Paste
Ctrl + G	Switches the grid on / off
→	Rotate element counterclockwise
←	Rotate element clockwise

In the implant menu:

- ↑ or – one implant size smaller
- ↓ or + one implant size larger

* You can print out the manual or order a hard copy from mediCAD Hectec GmbH.
(Delivery time <7 days)



Zoom Tools



Zoom All
Adjusts image size to fit into work area.



Zoom Rect.
Zooms a rectangular area, selected in the work area or overview window, to fit into the work area.



Zoom Pan
Moves the content of the work area.

You can use the scroll wheel of your mouse to zoom in or out in the work area or overview window. Using the zoom & window tool in the lower right corner, you can zoom the entire planning, the current zoom factor is shown.

Drawing Tools



Arrows
Creates freely placeable arrows.



Lines
Creates freely placeable lines, which can be helpful for measurements.



Points
Creates freely placeable points/markers.



Circles
Creates circles, ellipses, arcs and ellipse arcs.



Create Text
Creates freely placeable texts.



Edit and/or move Text
Allows editing and moving of existing texts.



Outlines
Creates outlines (e.g. tibia or femur outline), if required for planning.

Measurement Tools



Measure distance
Measures and displays the distance between any two points/lines.



Measure angle
Measures/draws and displays an angle between two previously drawn lines or by 3 or 4 points.

Additional Functions



OR-Viewer
Display of images on the operation room screen



Move/Copy/Mirror/Rotate
Single or multiple elements.



Quick Move/Copy/Mirror/Rotate
of single elements.



Delete
Activates delete mode.



Undo
Undoes the last action.



Redo
Redoes the last undo action.



Invert images
Inverts image colors on the screen.



Cut and move image area
Various edit functions for image areas.

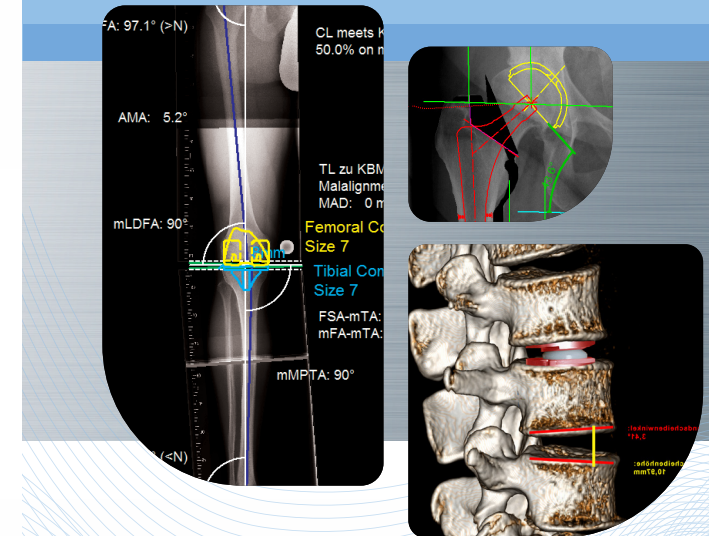


Window level/width
Allows modification of image values.



Format
Format adjustments for elements.

QUICK GUIDE mediCAD®



mediCAD®
The Orthopedic Solution

www.mediCAD.eu